

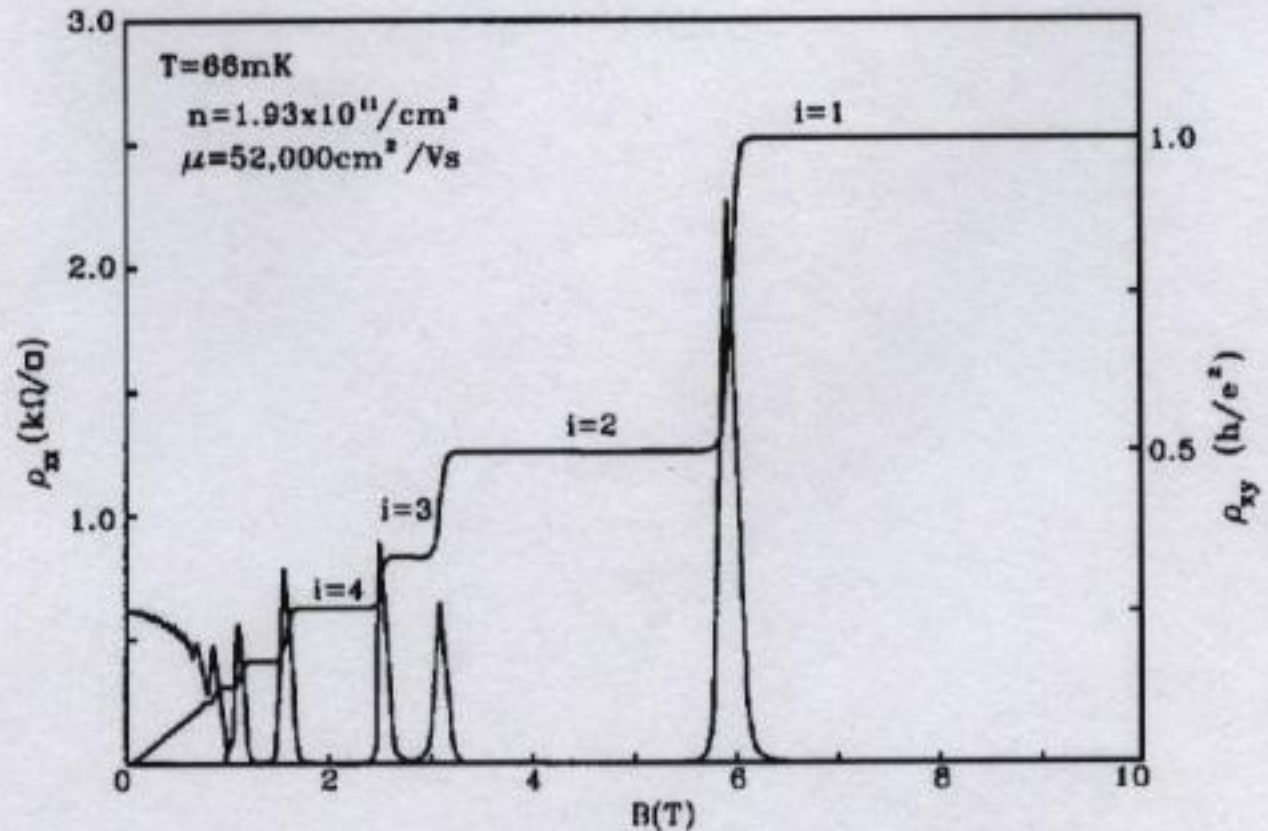
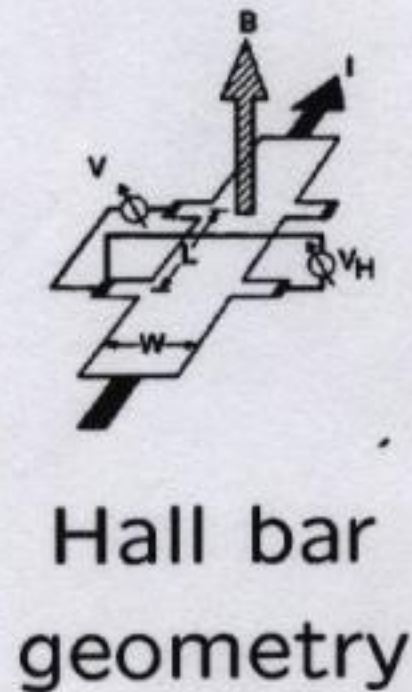
Correlated quantum percolation

N. Sandler (Ohio University)

H. Maei (Brandeis University)

J. Kondev (Brandeis University)

Supported by NSF and the Research Corporation



Localization in the lowest Landau level

$$\hat{H} = \frac{1}{2m} \left[\hat{\mathbf{p}} - \frac{e}{c} \mathbf{A}(\hat{\mathbf{x}}) \right]^2 + V(\hat{\mathbf{x}})$$

correlated random potential $\langle V(\mathbf{x})V(\mathbf{y}) \rangle = |\mathbf{x} - \mathbf{y}|^{-\alpha}$

